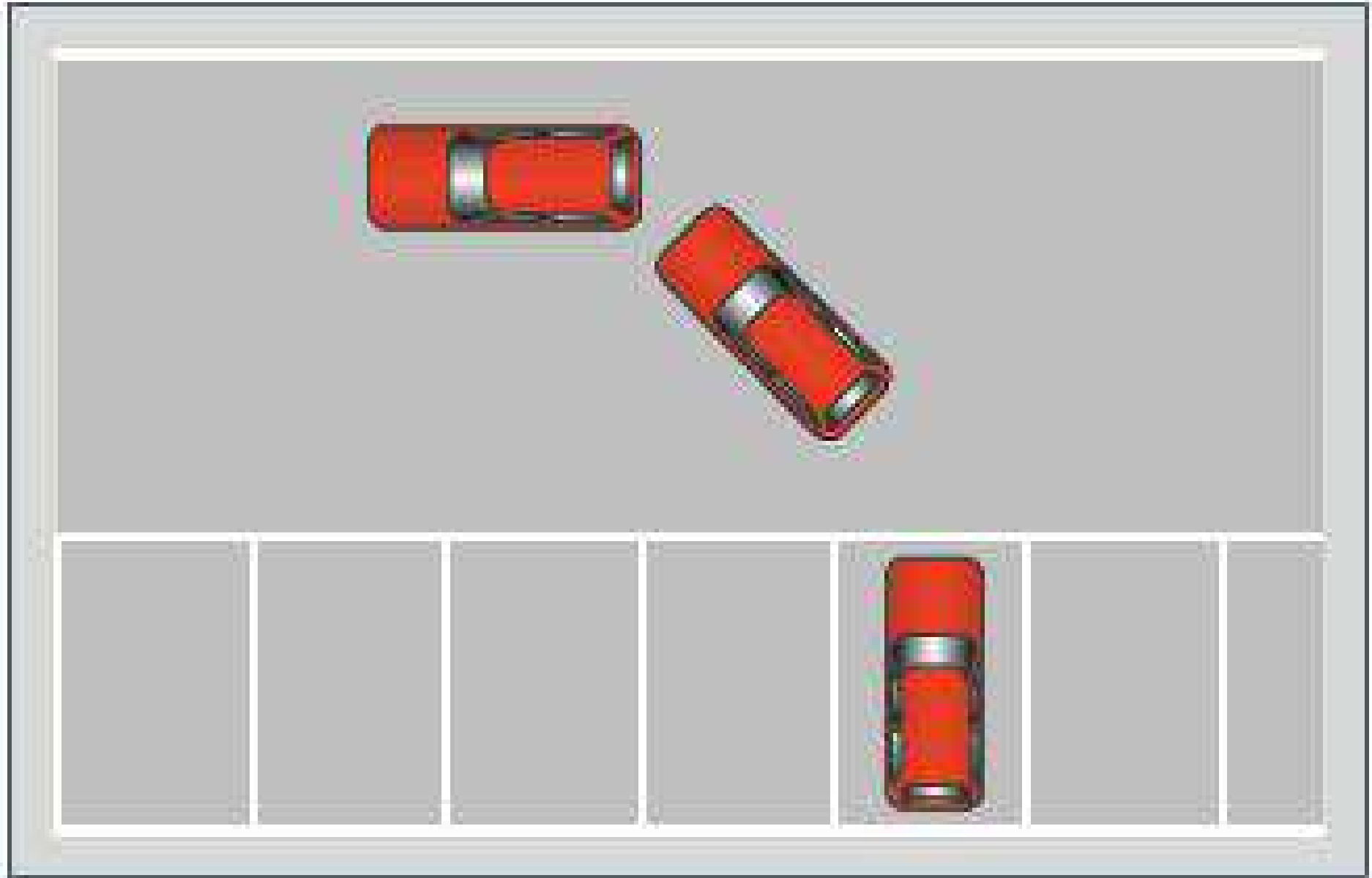


REVERSE (BAY) PARK



MSM Routine

Throughout your driving test you will need to show that you understand and can correctly use the MSM routine.

Mirrors: you must check your mirrors on a regular basis plus well before:

- Signalling.
- Changing Speed.
- Changing Direction.

Signals: both indicators and brake lights should be used to advise other road users of your intentions.

- Indicating does not mean that you have the automatic right to, for instance, change lanes etc, you must still check that it is safe to do so.
- Consider what you have seen in your mirrors before signalling.
- Will the signal be misleading?

Manoeuvre: Changing your speed or position in the road is potentially dangerous so you must make sure that you have carried out the above properly.

- You must continue to carry out effective observation while manoeuvring.

Remember:

- The more you are aware of what is happening around you the easier situations/hazards will be to deal with.